

# Series 4.3-10 – cable connectors

## Straight cable plugs (male)

For Semi-rigid cables, Sucoform and Multiflex cables

- Cable entry soldered
- Centre contact soldered

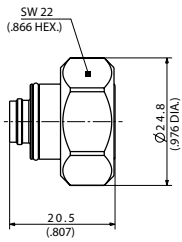


Fig. 1

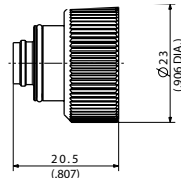


Fig. 2

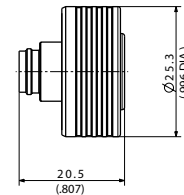


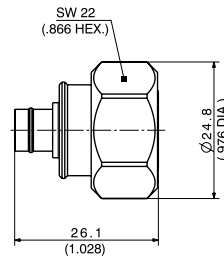
Fig. 3

HUBER+SUHNER type	Item no.	Cable group (example)	Packaging	Fig.
11_4310-50-5-X1/003_-H 11_4310-50-5-X1/003_-E	85020471 85021044	Y14 (SUCOFORM_250-1, EZ_250)	bulk 100 pcs single	1
11_4310-50-5-Y1/003_-E	85021045	Y14 (SUCOFORM_250-1, EZ_250)	single	2
11_4310-50-5-Z1/003_-H 11_4310-50-5-Z1/003_-E	85020523 85021047	Y14 (SUCOFORM_250-1, EZ_250)	bulk 100 pcs single	3

X: torque, Y: hand screw, Z: quick-lock

For semi-rigid, Sucoform and Multiflex cables

- Cable entry soldered
- Centre contact soldered

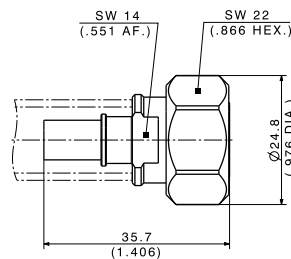


HUBER+SUHNER type	Item no.	Cable group (example)	Packaging
11_4310-50-3-X2/033_-H	85089256	Y12 (SUCOFORM_141_Cu)	bulk 100 pcs.

X: torque

Flexible cable

- Center contact plugged
- Outer contact: Crimped



HUBER+SUHNER type	Item no.	Cable group (example)	Packaging
11_4310-50-4-X1/033_-H	85078855	X28 (Spuma_240, LMR240)	bulk

X: torque

# Series 4.3-10 – cable connectors

## Right angle cable plugs (male)

For semi-rigid cables, Sucoform and Multiflex cables

- Cable entry soldered
- Centre contact soldered

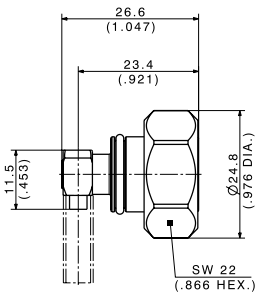


Fig. 1

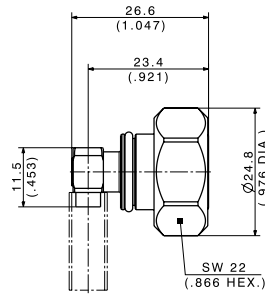


Fig. 2

HUBER+SUHNER type	Item no.	Cable group (example)	Packaging	Fig.
16_4310-50-2-X2/003_-H	85029015	Y3 (SUCOFORM_86)	bulk 100 pcs.	1
16_4310-50-3-X1/003_-H	85064160	Y12 (SUCOFORM_141)		2

X: torque

## Right angle cable plugs (male)

For semi-rigid cables, Sucoform and Multiflex cables

- Cable entry soldered
- Centre contact soldered

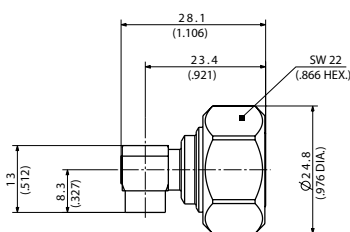


Fig. 1

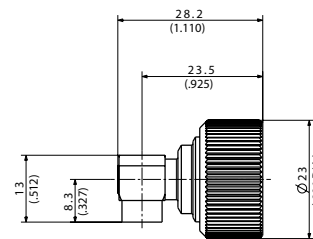


Fig. 2

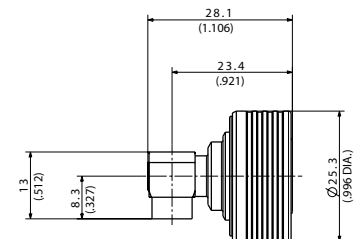


Fig. 3

HUBER+SUHNER type	Item no.	Cable group (example)	Packaging	Fig.
16_4310-50-5-X1/003_-E	85021049	Y14 (SUCOFORM_250-1)	bulk 100 pcs single	1
16_4310-50-5-Y1/003_-H 16_4310-50-5-Y1/003_-E	85020525 85021070	Y14 (SUCOFORM_250-1)	bulk 100 pcs single	2
16_4310-50-5-Z1/003_-H 16_4310-50-5-Z1/003_-E	85020526 85021071	Y14 (SUCOFORM_250-1)	bulk 100 pcs single	3

X: torque, Y: hand screw, Z: quick-lock

# Series 4.3-10 – cable connectors

## Straight cable jacks (female)

For semi-rigid cables, Sucoform and Multiflex cables

- Cable entry soldered
- Centre contact soldered

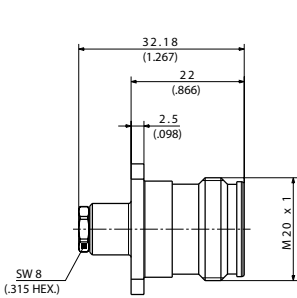


Fig. 1

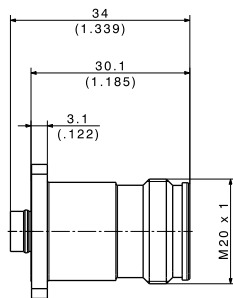


Fig. 2

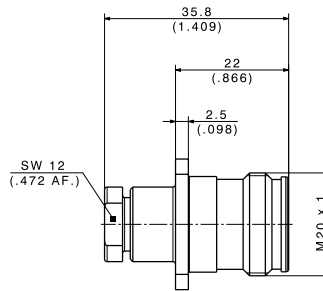
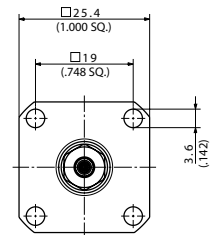


Fig. 3



Flange size for fig 1, 2 and 3

HUBER+SUHNER type	Item no.	Cable group (example)	Packaging	Notes	Fig.
25_4310-50-2-1/003_Y 25_4310-50-2-1/003_E	85020530 85021079	Y16 (SUCOFORM_86)	tray 20 pcs single	for cable type 0.086	1
25_4310-50-3-6/003_Y	85116109	Y5, Y12 (Sucoform/EZ 141)	tray	for cable type 0.141	2
25_4310-50-5-1/003_Y	85064165	Y14 (SUCOFORM_250-1)	tray 50 pcs	for cable size 0.250	3

For semi-rigid, Sucoform and Multiflex cables

- Cable entry soldered
- Centre contact soldered

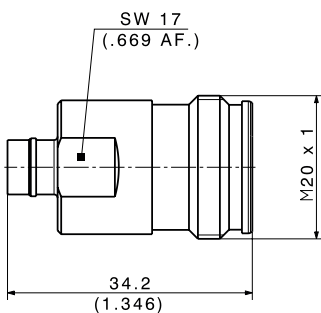


Fig. 1

HUBER+SUHNER type	Item no.	Cable group (example)	Packaging	Fig.
21_4310-50-3-1/003_Y	85068552	Y12 (SUCOFORM_141_Cu)	tray 50 pcs.	1

# Series 4.3-10 – receptacles

## Straight panel receptacle (jack)

With coaxial end

- 4 hole, 1 inch flange

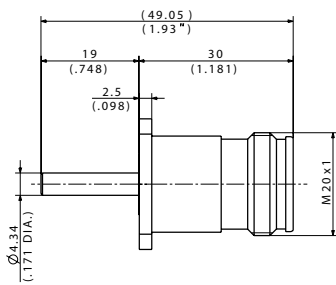


Fig. 1

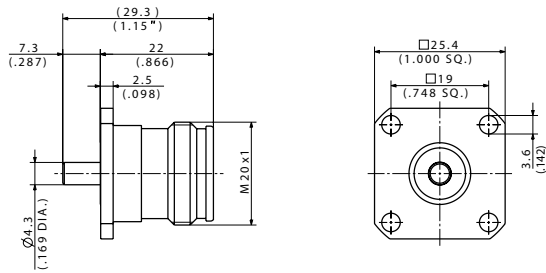


Fig. 2

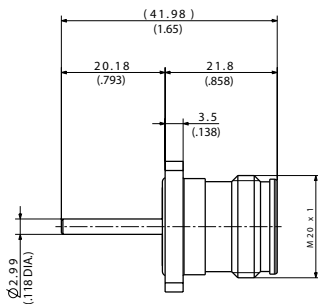


Fig. 3

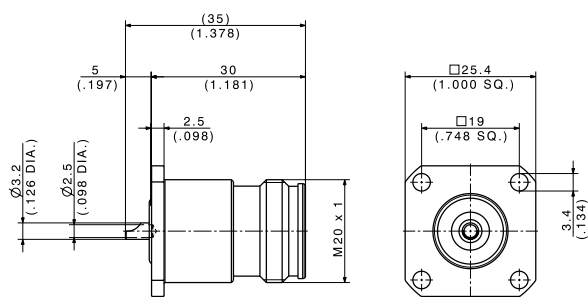


Fig. 4

HUBER+SUHNER type	Item no.	Packaging	Notes	Fig.
23_4310-50-0-1/003_Y 23_4310-50-0-1/003_E	85020598 85021072	tray 40 pcs single		1
23_4310-50-0-2/003_Y 23_4310-50-0-2/003_E	85020599 85021073	tray 60 pcs single		2
23_4310-50-0-5/003_Y 23_4310-50-0-5/003_E	85021011 85020470	tray 60 pcs single	with panel seal	3
23_4310-50-0-16/003_Y	85064166	tray 50 pcs		4