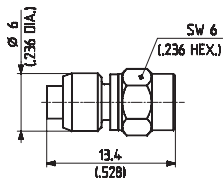


Series SMC – cable connectors

Straight cable plugs (male)

For semi-rigid cables

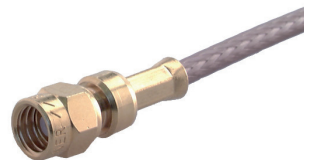
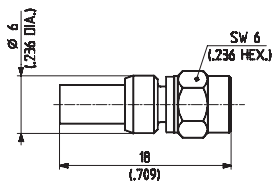
- Cable entry soldered
- Centre contact soldered



HUBER+SUHNER type	Item no.	Cable group (example)	Packaging	Assembly instruction
11_SMC-50-2-13/111_NH	22650675	Y3, Y11, Y15 (EZ_86)	bulk 100 pcs.	9002

For flexible cables

- HUBER+SUHNER full crimp
- Taper sleeves see page 554



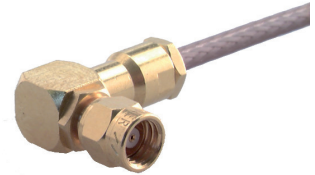
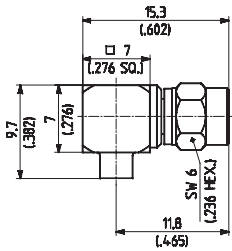
HUBER+SUHNER type	Item no.	Cable group (example)	Packaging	Plating body	Assembly instruction	Crimp insert
11_SMC-50-1-10/111_NH	22648629	U1 (RG_178_B/U, ENVIROFLEX_178)	bulk 100 pcs.	gold	3077	1A
11_SMC-50-2-10/111_NE 11_SMC-50-2-10/111_NH	22640811 22645841	U2 (RG_316_/U, ENVIROFLEX_316)	single bulk 100 pcs.	gold		
11_SMC-50-2-10/133_NE	22641528	U2 (RG_316_/U, ENVIROFLEX_316)	single	SUCOPLATE®		
11_SMC-50-2-11/111_NE	22640251	U4 (K_02252_D, ENVIROFLEX_316_D)	single	gold		

Series SMC – cable connectors

Right angle cable plugs (male)

For semi-rigid cables

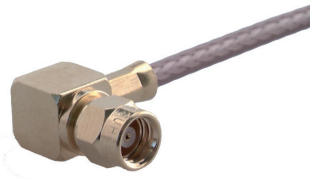
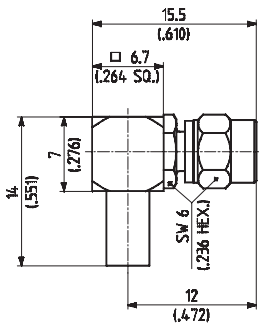
- Cable entry soldered
- Centre contact soldered



HUBER+SUHNER type	Item no.	Cable group (example)	Packaging	Assembly instruction
16_SMC-50-2-25/111_NE	22644126	Y3, Y11, Y15 (EZ_86)	single	9160
16_SMC-50-2-25/111_NH	23003713		bulk 100 pcs.	

For flexible cables

- HUBER+SUHNER full crimp
- Taper sleeves see page 554



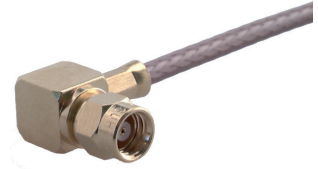
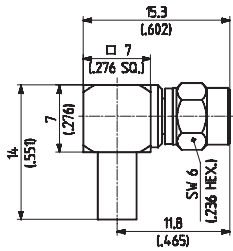
HUBER+SUHNER type	Item no.	Cable group (example)	Packaging	Plating body	Assembly instruction	Crimp insert
16_SMC-50-1-10/111_NE	22543364	U1 (RG_178_B/U,	single	gold	3096	1A
16_SMC-50-1-10/111_NH	22648283	ENVIROFLEX_178)	bulk 100 pcs.			
16_SMC-50-2-10/111_NE	22640269	U2 (RG_316_/U,	single	gold		
16_SMC-50-2-10/111_NH	22645323	ENVIROFLEX_316)	bulk 100 pcs.			
16_SMC-50-2-11/111_NE	22543366	U4 (K_02252_D,	single	gold		
		ENVIROFLEX_316_D)				

Series SMC – cable connectors

Right angle cable plugs (male)

For flexible cables

- Cable entry crimp
- Centre contact soldered
- Taper sleeves see page 554

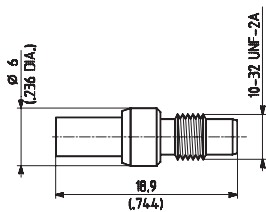


HUBER+SUHNER type	Item no.	Cable group (example)	Packaging	Assembly instruction	Crimp insert
16_SMC-50-1-20/111_NE	22644083	U1 (RG_178_B/U, ENVIROFLEX_178)	single	9157	A
16_SMC-50-2-20/111_NE	22643949	U2 (RG_316_/U, ENVIROFLEX_316)			

Straight cable jacks (female)

For flexible cables

- HUBER+SUHNER full crimp
- Taper sleeves see page 554

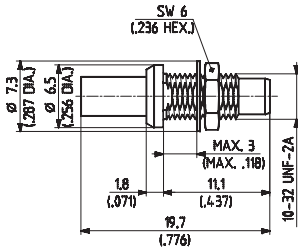
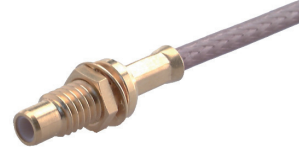


HUBER+SUHNER type	Item no.	Cable group (example)	Packaging	Assembly instruction	Crimp insert
21_SMC-50-2-10/111_NE	22640279	U2 (RG_316_/U, ENVIROFLEX_316)	single	3077	1 A

Series SMC – cable connectors

For flexible cables

- HUBER+SUHNER full crimp
- Rear mounting
- Taper sleeves see page 554



HUBER+SUHNER type	Item no.	Cable group (example)	Packaging	Assembly instruction	Mounting hole	Crimp insert
24_SMC-50-1-10/111_NE ¹⁾	22640290	U1 (RG_178_B/U, ENVIROFLEX_178)	single	3077	ML 11	1 A
24_SMC-50-2-110/111_NE	22660133	U2 (RG_316_/U, ENVIROFLEX_316)	single			

Series SMC – receptacles

Straight bulkhead receptacles, jacks (female)

- Solder end
- Insulating washers see page 556

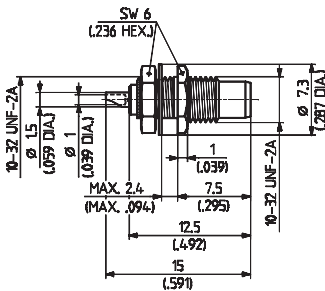


Fig. 1

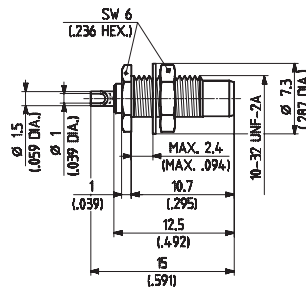


Fig. 2

HUBER+SUHNER type	Item no.	Packaging	Mounting hole	Fig.	Notes
22_SMC-50-0-2/111_NE	22640281	single	ML 11	1	front mounting
22_SMC-50-0-3/111_NE	22640282			2	rear mounting

¹⁾ Centre contact NOT captivated

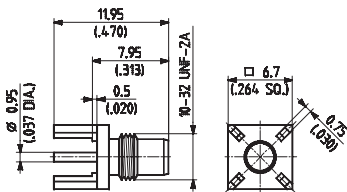
Series SMC – PCB connectors

Straight PCB jacks (female)

- 2.54 mm/0.100 in. grid
- With stand-off



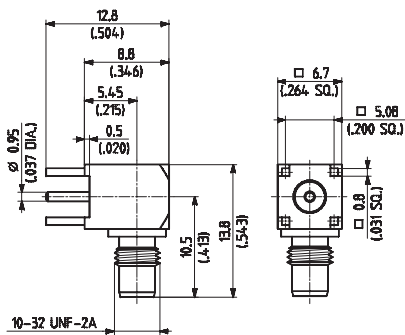
SMC



HUBER+SUHNER type	Item no.	Packaging	Mounting hole
82_SMC-50-0-1/111_NE	22640313	single	ML 15
82_SMC-50-0-1/111_NH	22646201	bulk 100 pcs.	

Right angle PCB jacks (female)

- 2.54 mm/0.100 in. grid
- With stand-off



HUBER+SUHNER type	Item no.	Packaging	Mounting hole
85_SMC-50-0-1/111_NE	22640326	single	ML 15
85_SMC-50-0-1/111_NH	22652987	bulk 100 pcs.	
85_SMC-50-0-1/133_NE	22642472	single	