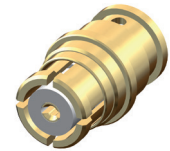


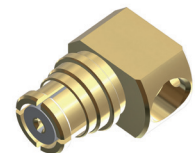
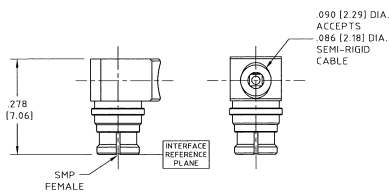
SMP – cable connectors

Straight cable jacks (female)



HUBER+SUHNER type	Item no.	Cable group (example)	Typ. return loss	Packaging
21_SMP-50-2-1/111_NE	80377838	Y3, Y16, Y11 (2.18 mm/0.086 in)	DC - 20 GHz: 29 dB 20 - 30 GHz: 27 dB 30 - 40 GHz: 20 dB	single

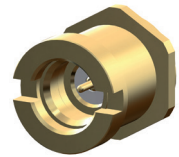
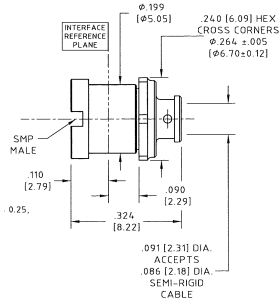
Right angle cable jack (female)



HUBER+SUHNER type	Item no.	Cable group (example)	Typ. return loss	Packaging
26_SMP-50-2-2/111_NE	80377839	Y3, Y16, Y11 (2.18 mm/0.086 in)	DC - 20 GHz: 25 dB 20 - 26.5 GHz: 20 dB 26.5 - 30 GHz: 15 dB 26.5 - 40 GHz: 10 dB	single

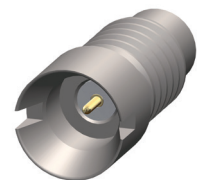
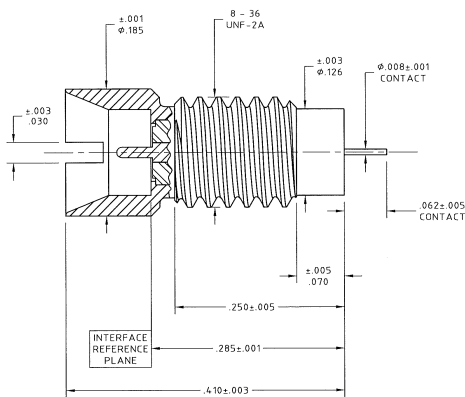
SMP – panel mount connectors

Straight bulkhead cable plugs (male)



HUBER+SUHNER type	Item no.	Cable group (example)	Typ. return loss	Detent	Packaging
14_SMP-50-2-S2/119_NE	80377975	Y3, Y16, Y11 (2.18 mm/0.086 in)	DC - 20 GHz: 29 dB 20 - 30 GHz: 27 dB 30 - 40 GHz: 20 dB	smooth bore	single
14_SMP-50-2-L2/119_NE	80377974	Y3, Y16, Y11 (2.18 mm/0.086 in)	DC - 20 GHz: 29 dB 20 - 30 GHz: 27 dB 30 - 40 GHz: 20 dB	limited detent	single

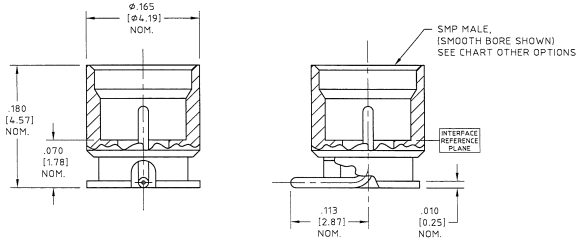
Straight panel mount receptacle (male)



HUBER+SUHNER type	Item no.	Operating frequency	Detent	Pin length	Packaging
12_SMP-50-0-S1/119_NE	80378538	DC - 40 GHz	catchers mitt	0.062"/1.57 mm additional length on request	single

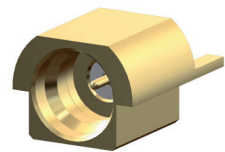
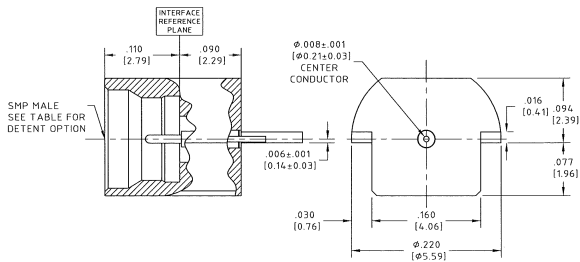
SMP – PCB mount connectors

Straight PCB plugs (male)



HUBER+SUHNER type	Item no.	Detent	Operating frequency	Return loss	Packaging
81_SMP-S50-0-L1/111_NE	80377946	limited detent	DC - 40GHz	depends on PCB stack-up, contact HUBER+SUHNER	single
81_SMP-S50-0-S1/111_NE	80377947	smooth bore	DC - 40GHz	depends on PCB stack-up, contact HUBER+SUHNER	single

Edge mount PCB plugs (male)



HUBER+SUHNER type	Item no.	Detent	Operating frequency	Return loss	Packaging
91_SMP-50-0-L1/111_NE	80377833	limited detent	DC - 40GHz	depends on PCB stack-up, contact HUBER+SUHNER	single
91_SMP-50-0-S1/111_NE	80377835	smooth bore	DC - 40GHz	depends on PCB stack-up, contact HUBER+SUHNER	single