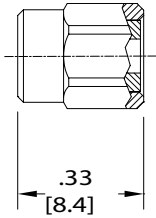


# Series SSMA – cable connectors

## SSMA plug (male)

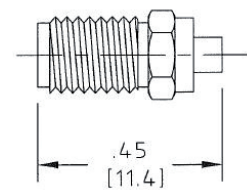
For semi-rigid cables



HUBER+SUHNER type	Cable type	Cable group	Packaging
29100	semi-rigid	A92 - 0.086 semi-rigid (2.18/0.086)	single

## SSMA jack (female)

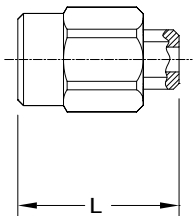
For semi-rigid cables



HUBER+SUHNER type	Cable type	Cable group	Packaging
29101	semi-rigid	A92 - 0.086 semi-rigid (2.18/0.086)	single

## SSMA plug (male)

For semi-rigid cables



HUBER+SUHNER type	Cable type	Cable dia, mm/in	L, mm/in
29123	0.086 semi-rigid	2.18/0.86	11.18/0.44
29123-1	0.047 semi-rigid	1.19/0.47	12.95/0.51

# Series SSMA - cable connectors

## SSMA bulkhead jack (female)

For flexible cables

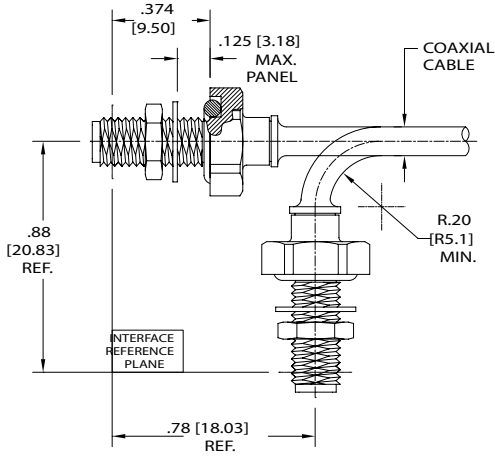


Fig. 1

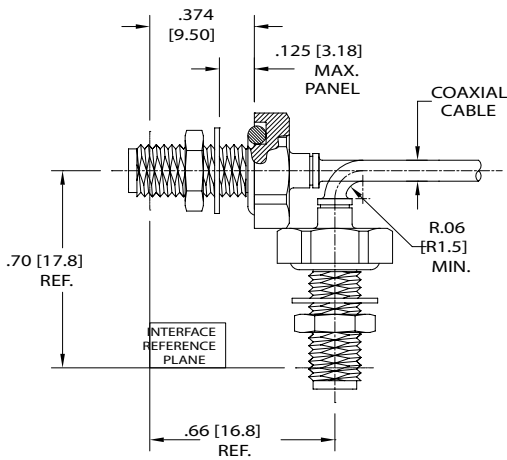


Fig. 2

HUBER+SUHNER type	Cable group (mm/in)	Cable type	Cable	Fig.
29102CR-32-24	A11 - (1.70/0.067)	flexible	32024E - Minibend L	1
29102CR-32-41	A20 - (1.14 /0.045)	flexible	32041E - Microbend	2
29102CR-32-81	A10 - (2.18 /0.086)	flexible	32081E - Minibend	1
29102CR-32-85	A21 - (1.22 /0.048)	flexible	32085E - Microbend L	1
29102CR-32-87	A14 - (1.22 /0.048)	flexible	32087E - Minibend LH	1
29102CR-32-91	A13 - (1.14 /0.045)	flexible	32091E - Minibend H	1

Note: Sold on cable assemblies only.

# Series SSMA - cable connectors

## SSMA plug (male)

For flexible cables

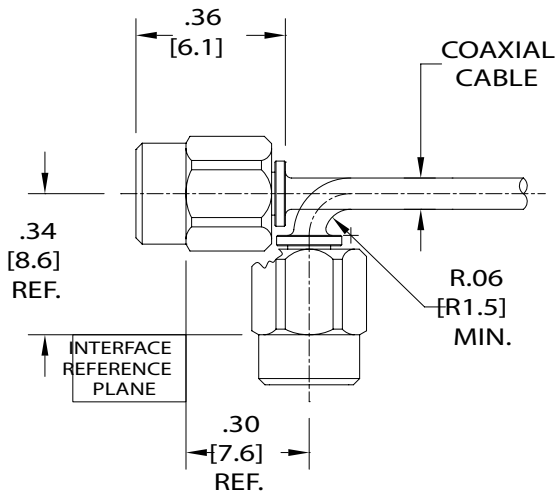


Fig. 1

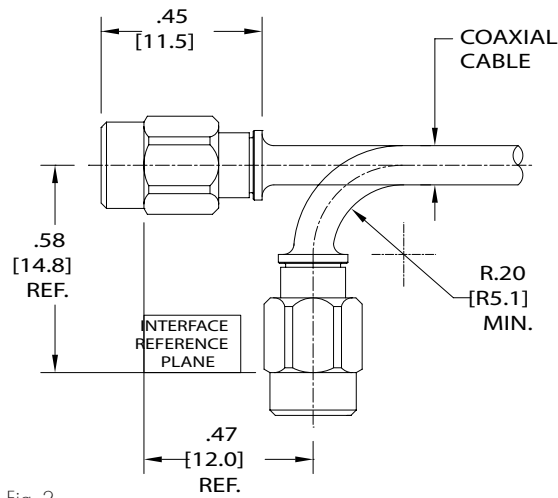
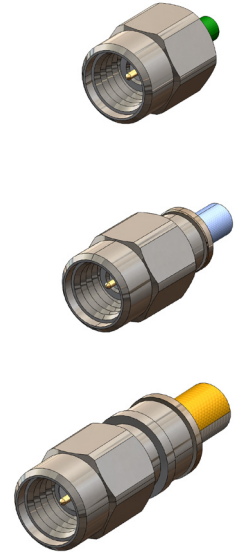


Fig. 2

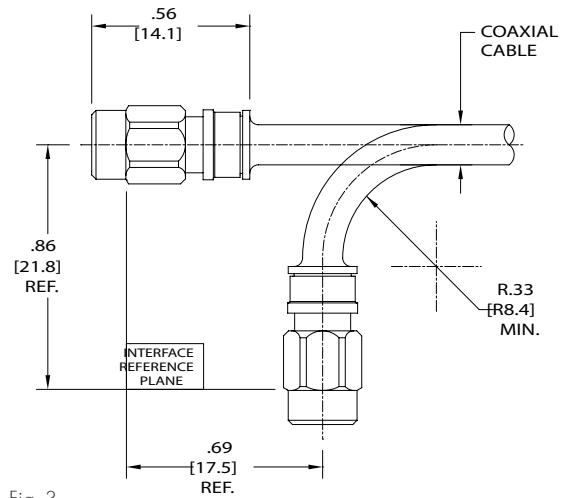


Fig. 3

HUBER+SUHNER type	Cable group (mm/in)	Cable type	Cable	Fig.
29112CR-32-41	A20 - (1.14 /0.045)	flexible	32041E - Microbend	1
29112CR-32-81	A10 - (2.18 /0.086)	flexible	32081E - Minibend	2
29112CR-32-85	A21 - (1.22 /0.048)	flexible	32085E - Microbend L	2
29112CR-32-87	A14 - (1.22 /0.048)	flexible	32087E - Minibend LH	2
29112CR-32-91	A13 - (1.14 /0.045)	flexible	32091E - Minibend H	2
29112CR-32381	A10 - (2.18 /0.086)	flexible	32081E - Minibend	2
29112CR-32-24	A11- (1.70/0.067)	flexible	32024E - Minibend L	2
29112CR-32-21	A32 - (2.36 /0.093)	flexible	32021E - Mini141 H	3
29112CR-32-22	A30 - (2.69 /0.106)	flexible	32022E - Mini141	3
29112CR-32322	A31 - (2.59 /0.102)	flexible	32322E - Mini141 CT	3

Note: Sold on cable assemblies only.

Cable groups see page 32

Assembly tools see page 531

Mounting holes/PCB layouts see page 561

# Series SSMA - cable connectors

## SSMA bulkhead jack (female)

For flexible cables

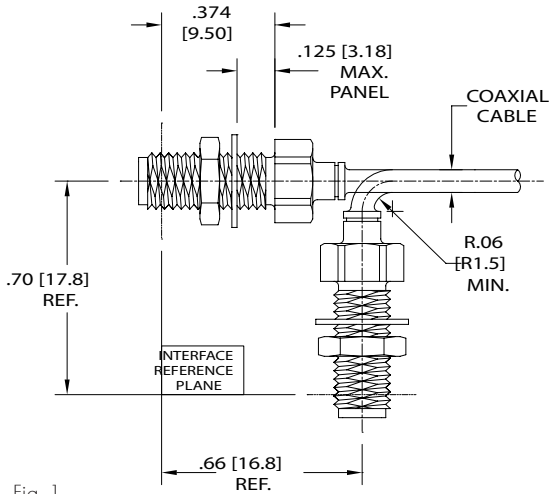


Fig. 1

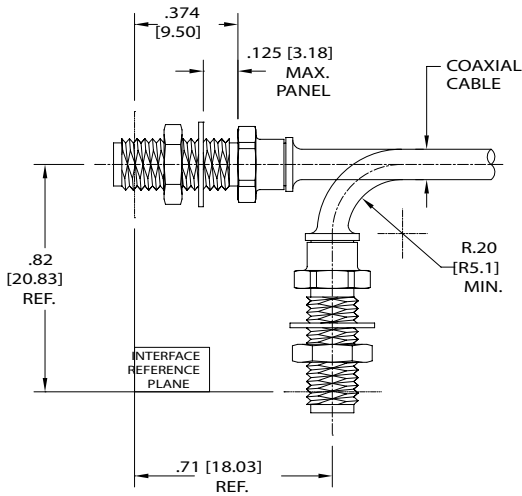


Fig. 2

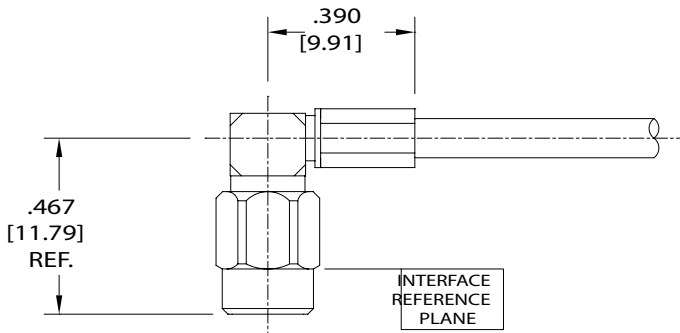
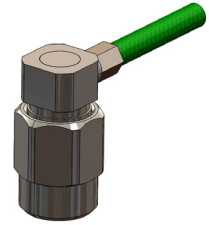
HUBER+SUHNER type	Connectors	Cable group (mm/in)	Cable type	Cable	Fig.
29125CR-32-41	SSMA jack (f) bulkhead	A20 - (1.14 /0.045)	flexible	32041E - Microbend	1
29125CR-32-24	SSMA jack (f) bulkhead	A11- (1.70/0.067)	flexible	32024E - Minibend L	2
29125CR-32-81	SSMA jack (f) bulkhead	A10 - (2.18 /0.086)	flexible	32081E - Minibend	2
29125CR-32-85	SSMA jack (f) bulkhead	A21 - (1.22 /0.048)	flexible	32085E - Microbend L	2
29125CR-32-87	SSMA jack (f) bulkhead	A14 - (1.22 /0.048)	flexible	32087E - Minibend LH	2
29125CR-32-91	SSMA jack (f) bulkhead	A13 - (1.14 /0.045)	flexible	32091E - Minibend H	2
29125CR-32381	SSMA jack (f) bulkhead	A10 - (2.18 /0.086)	flexible	32081E - Minibend	2

Note: Sold on cable assemblies only.

# Series SSMA - cable connectors

## SSMA right angle plug (male)

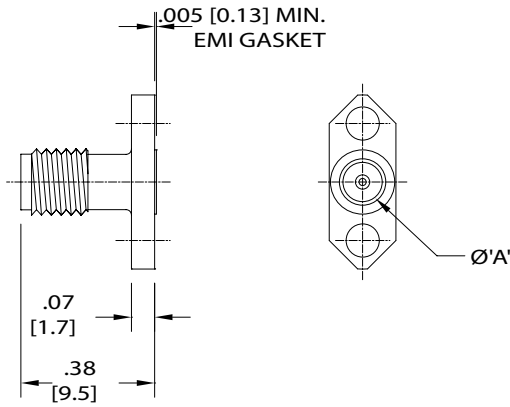
For flexible cables



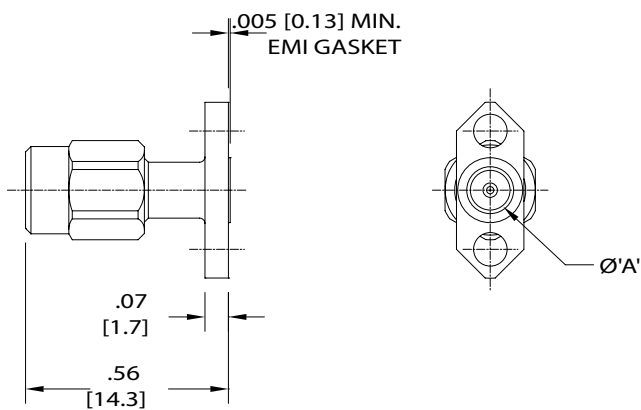
HUBER+SUHNER type	Cable group (mm/in)	Cable type	Cable
29111CR-32-41	A20 - (1.14 /0.045)	flexible	32041E - Microbend
29111CR-32-24	A11- (1.70/0.067)	flexible	32024E - Minibend L
29111CR-32-81	A10 - (2.18 /0.086)	flexible	32081E - Minibend
29111CR-32-85	A21 - (1.22 /0.048)	flexible	32085E - Microbend L
29111CR-32-87	A14 - (1.22 /0.048)	flexible	32087E - Minibend LH
29111CR-32-91	A13 - (1.14 /0.045)	flexible	32091E - Minibend H
29111CR-32381	A10 - (2.18 /0.086)	flexible	32081E - Minibend

# Series SSMA - receptacles

- SSMA flanged mount jack (female)



HUBER+SUHNER type	Connectors	Accepts pin dia. mm/in	Ø A mm/in
29196	SSMA jack (f)	$0.51 \pm 0.03 / 0.020 \pm 0.001$	2.79/0.110
29196-1	SSMA jack (f)	$0.38 \pm 0.03 / 0.015 \pm 0.001$	2.79/0.110
29196-2	SSMA jack (f)	$0.31 \pm 0.03 / 0.012 \pm 0.001$	2.11/0.083



HUBER+SUHNER type	Connectors	Accepts pin dia. mm/in	Ø A mm/in
29195	SSMA plug (m)	$0.51 \pm 0.03 \times 1.65 / 0.020 \pm 0.001 \times 0.065$	2.79/0.110
29195-1	SSMA plug (m)	$0.38 \pm 0.03 \times 1.27 / 0.015 \pm 0.001 \times 0.050$	2.79/0.110
29195-2	SSMA plug (m)	$0.31 \pm 0.03 \times 1.02 / 0.012 \pm 0.001 \times 0.040$	2.11/0.083

Note: replacement gasket part number 632-2.