

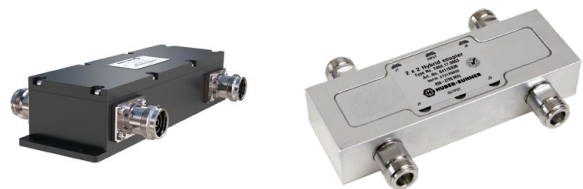
Multiplexers/Filters



HUBER+SUHNER type	Item no.	Interface (female)	Frequency (MHz)		PIM < (dBc)	Comment
			Low band	High band		
2501.17.0092	84103626	N	80 to 960	1695 to 2700	-155	TETRA + cellular + WiFi diplexer
2501.17.0094	85029272	N	80 to 2170	2400 to 2500	-153	WiFi 2.4 GHz injector
2501.17.0095	85029273	N	80 to 2690	3300 to 5850	-150	WiFi 5 GHz injector
2501.17.0097	85029235	N	80 to 2170	2400 to 2500 4900 to 5850	-161	WiFi 2.4 + 5 GHz injector
7501.17.001	84045218	N	80 to 2170	2400 to 2500	-153	WiFi 2.4 injector

HUBER+SUHNER type	Item no.	Interface (female)	Frequency (MHz)				Comment
			Band 1	Band 2	Band 3	Band 4	
2501.41.0100	85070953	7/16	380 to 960	1710 to 1880	1920 to 2170	2500 to 2690	TETRA + GSM/ UMTS, LTE

Hybrid and matrix couplers



HUBER+SUHNER type	Item no.	Interface (female)	Frequency (MHz)	PIM < (dBc)	Coupling (dB)	Comment
7404.17.0003	84115336	N	694 to 2700	-161	3	2 × 2
7404.31.0001	85078458	4.3-10	694 to 2700	-161	3	2 × 2
7406.17.0002	85029248	N	694 to 2700	-161	4.8	3 × 3

Power splitters



HUBER+SUHNER type	Item no.	Interface (female)	Frequency (MHz)	PIM < (dBc)	Remarks	Split loss (dB)
5501.17.0030	85029258	N	380 to 2700	-155	2 way	3
5501.17.0031	85029259	N	380 to 2700	-155	3 way	4.8
5501.41.0030	85029262	7/16	380 to 2700	-155	2 way	3
5502.17.0050	85029265	N	694 to 3800	-161	2 way	3
5502.41.0050	85029268	7/16	694 to 3800	-161	2 way	3
5501.31.0020	85075304	4.3-10	380 to 2700	-161	2 way	3
5501.31.0030	85075306	4.3-10	380 to 2700	-161	3 way	4.8
5501.31.0040	85075307	4.3-10	380 to 2700	-161	4 way	6
5504.17.0009	85078528	N	2000 to 6000		2 way	3
5502.19.0004	22650303	SMA female/male	2000 to 2500		2 way	3

Directional couplers



HUBER+SUHNER type	Item no.	Interface (female)	Frequency (MHz)	PIM < (dBc)	Coupling (dB)
7215.31.0001	85075255	4.3-10	694 to 2700	-161	15
7206.31.0002	85075253	4.3-10	694 to 2700	-161	6
7210.31.0003	85075254	4.3-10	694 to 2700	-161	10
7220.31.0004	85075256	4.3-10	694 to 2700	-161	20

Directivity typ. ≥ 20 dB

Tappers



HUBER+SUHNER type	Item no.	Interface (female)	Frequency (MHz)	PIM < (dBc)	Inequality between outputs	Ratio between outputs (dB)
5501.31.0002	85075310	4.3-10	350 to 2700	-161	2:1 (3 dB)	-1.8/-4.8
5501.31.0003	85075311	4.3-10	350 to 2700	-161	3:1 (4.8 dB)	-1.3/-6.1
5501.31.0004	85075312	4.3-10	350 to 2700	-161	4:1 (6.0 dB)	-1/-7
5501.31.0010	85075315	4.3-10	350 to 2700	-161	10:1 (10 dB)	-0.4/-10.4
5501.31.0015	85075316	4.3-10	350 to 2700	-161	30:1 (15 dB)	-0.1/-15.1
5501.31.0100	85075317	4.3-10	350 to 2700	-161	100:1 (20 dB)	-0.1/-20.1

Wilkinson dividers



HUBER+SUHNER type	Item no.	Interface (female)	Frequency (MHz)	PIM < (dBc)	Remarks	Split loss (dB)
5501.17.0027	84104565	N	380 to 2700	-	2 way	3
5502.17.0030	84104570	N	694 to 2700	-	2 way	3
5502.17.0032	84104573	N	694 to 2700	-	4 way	6
5502.17.0060 *	85015454	N	698 to 2700	-	2 way	3

*Wilkinson Splitter with one DC path blocked