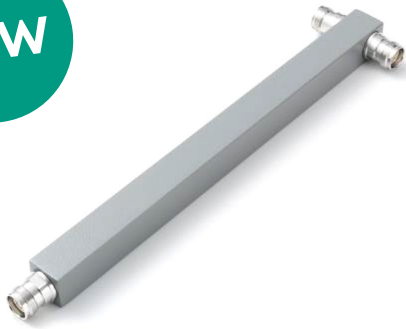


Splitter

## Reactive Power Splitter



Ordering information	<b>2-Way Reactive Power Splitter</b>
Type no.	<b>5501.31.0102</b>
Frequency range	<b>380 – 3800 MHz</b>
Version	<b>4.3-10</b>
Length	<b>318 mm</b>
Description	<ul style="list-style-type: none"> <li>• Installation Equipment for Special Communication Antennas</li> <li>• 2-Way Low-loss Power Splitter</li> <li>• Multi-band</li> <li>• Low PIM -160 dBc</li> </ul>
Item no.	-

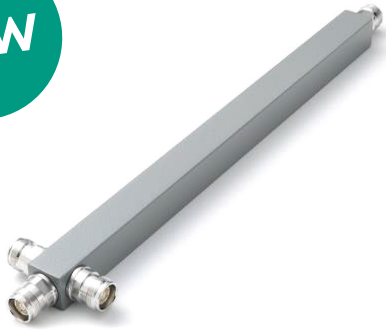
Electrical data	Band 1
Frequency	380 – 3800 MHz
Split Loss	3.5 dB
Impedance	50 Ohm
Composite power max.	500 W
Peak envelope power	1500 W
Ambient temperature	25 °C
PIM3	-160 dBc at 2 × 43 dBm

Mechanical data	
Dimensions (length × height × width)	318 × 25 × 25 mm (without connector dimension)
Weight	0.5 kg
Connector	Input 1 × 4.3-10 (female), Output 2 × 4.3-10 (female)

Environmental data	
Environmental conditions	indoor/outdoor
Operation temperature	-55 to 60 °C
IP rating	IP65
RoHS 2011/65/EU	compliant

Splitter

## Reactive Power Splitter



Ordering information	<b>3-Way Reactive Power Splitter</b>
Type no.	<b>5501.31.0103</b>
Frequency range	<b>380 – 3800 MHz</b>
Version	<b>4.3-10</b>
Length	<b>365 mm</b>
Description	<ul style="list-style-type: none"> <li>• Installation Equipment for Special Communication Antennas</li> <li>• 3-Way Low-loss Power Splitter</li> <li>• Multi-band</li> <li>• Low PIM -160 dBc</li> </ul>
Item no.	–

Electrical data	Band 1
Frequency	380 – 3800 MHz
Split Loss	5.6 dB
Impedance	50 Ohm
Composite power max.	500 W
Peak envelope power	1500 W
Ambient temperature	25 °C
PIM3	-160 dBc at 2 × 43 dBm

Mechanical data	
Dimensions (length × height × width)	365 × 25 × 25 mm (without connector dimension)
Weight	0.64 kg
Connector	Input 1 × 4.3-10 (female), Output 3 × 4.3-10 (female)

Environmental data	
Environmental conditions	indoor/outdoor
Operation temperature	-55 to 60 °C
IP rating	IP65
RoHS 2011/65/EU	compliant

Splitter

## Reactive Power Splitter



Ordering information	<b>4-Way Reactive Power Splitter</b>
Type no.	<b>5501.31.0104</b>
Frequency range	<b>380 – 3800 MHz</b>
Version	<b>4.3-10</b>
Length	<b>399 mm</b>
Description	<ul style="list-style-type: none"> <li>• Installation Equipment for Special Communication Antennas</li> <li>• 4-Way Low-loss Power Splitter</li> <li>• Multi-band</li> <li>• Low PIM -160 dBc</li> </ul>
Item no.	-

Electrical data	Band 1
Frequency	380 – 3800 MHz
Split Loss	6.8 dB
Impedance	50 Ohm
Composite power max.	500 W
Peak envelope power	1500 W
Ambient temperature	25 °C
PIM3	-160 dBc at 2 × 43 dBm

Mechanical data	
Dimensions (length × height × width)	399 × 25 × 25 mm (without connector dimension)
Weight	0.75 kg
Connector	Input 1 × 4.3-10 (female), Output 4 × 4.3-10 (female)

Environmental data	
Environmental conditions	indoor/outdoor
Operation temperature	-55 to 60 °C
IP rating	IP65
RoHS 2011/65/EU	compliant

Splitter

## Reactive Power Splitter



Ordering information	<b>2-Way Reactive Power Splitter</b>
Type no.	<b>5501.17.0030</b>
Frequency range	<b>380 – 2700 MHz</b>
Version	<b>N (female)</b>
Length	<b>267 mm</b>
Description	<ul style="list-style-type: none"> <li>• Evenly split high power signals with minimal reflections or loss</li> <li>• Wide frequency range allows use with multiband antennas and leaky cable systems</li> </ul>
Item no.	85029258

Electrical data	Band 1
Frequency	380 – 2700 MHz
Split Loss	3 dB
Insertion Loss	0.1 dB
Char. Impedance	50 Ohm
Composite power max.	300 W
Intermodulation distortion	-155 dBc at 2 × 43 dBm

Mechanical data	
Dimensions (height × width × length)	28.5 × 28.5 × 267 mm
Weight	0.33 kg
Connector	Input 1 × N jack (female), Output 2 × N jack (female)

Environmental data	
Environmental conditions	indoor/outdoor
Operation temperature	-35 to 85 °C
IP rating	IP67
RoHS 2011/65/EU	compliant

Splitter

## Reactive Power Splitter



Ordering information	<b>3-Way Reactive Power Splitter</b>
Type no.	<b>5501.17.0031</b>
Frequency range	<b>380 – 2700 MHz</b>
Version	<b>N (female)</b>
Length	<b>262 mm</b>
Description	<ul style="list-style-type: none"> <li>• Evenly split high power signals with minimal reflections or loss</li> <li>• Wide frequency range allows use with multiband antennas and leaky cable systems</li> </ul>
Item no.	85029259

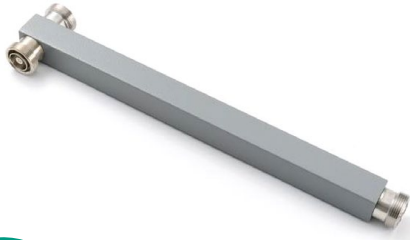
Electrical data	Band 1
Frequency	380 – 2700 MHz
Split Loss	4.8 dB
Insertion Loss	0.1 dB
Char. Impedance	50 Ohm
Composite power max.	300 W
Intermodulation distortion	-155 dBc at 2 × 43 dBm

Mechanical data	
Dimensions (height × width × length)	28.5 × 28.5 × 262 mm
Weight	0.37 kg
Connector	Input 1 × N jack (female), Output 3 × N jack (female)

Environmental data	
Environmental conditions	indoor/outdoor
Operation temperature	-35 to 85 °C
IP rating	IP67
RoHS 2011/65/EU	compliant

Splitter

## Reactive Power Splitter



Ordering information	<b>2-Way Reactive Power Splitter</b>
Type no.	<b>5501.41.0102</b>
Frequency range	<b>380 – 4000 MHz</b>
Version	<b>7/16 (female)</b>
Length	<b>318 mm</b>
Description	<ul style="list-style-type: none"> <li>• Installation Equipment for Special Communication Antennas</li> <li>• 2-Way Low-loss Power Splitter</li> <li>• Multi-band</li> <li>• Low PIM -160 dBc</li> </ul>
Item no.	-

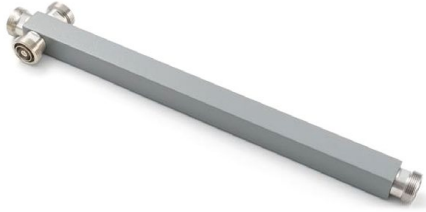
Electrical data	Band 1
Frequency	380 – 4000 MHz
Split Loss	3.0 dB
Impedance	50 Ohm
Composite power max.	500 W
Peak envelope power	1500 W
Ambient temperature	25 °C
PIM3	-160 dBc at 2 × 43 dBm

Mechanical data	
Dimensions (length × height × width)	318 × 25 × 25 mm (without connector dimension)
Weight	0.6 kg
Connector	Input 1 × 7/16 (female), Output 2 × 7/16 (female)

Environmental data	
Environmental conditions	indoor/outdoor
Operation temperature	-55 to 60 °C
IP rating	IP65
RoHS 2011/65/EU	compliant

Splitter

## Reactive Power Splitter



Ordering information	<b>3-Way Reactive Power Splitter</b>
Type no.	<b>5501.41.0103</b>
Frequency range	<b>380 – 4000 MHz</b>
Version	<b>7/16 (female)</b>
Length	<b>365 mm</b>
Description	<ul style="list-style-type: none"> <li>• Installation Equipment for Special Communication Antennas</li> <li>• 2-Way Low-loss Power Splitter</li> <li>• Multi-band</li> <li>• Low PIM -160 dBc</li> </ul>
Item no.	-

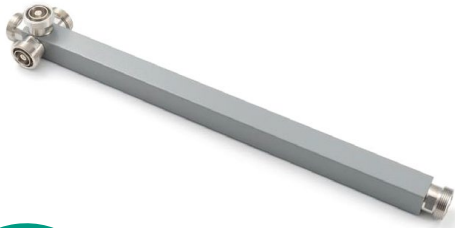
Electrical data	Band 1
Frequency	380 – 4000 MHz
Split Loss	4.8 dB
Impedance	50 Ohm
Composite power max.	500 W
Peak envelope power	1500 W
Ambient temperature	25 °C
PIM3	-160 dBc at 2 × 43 dBm

Mechanical data	
Dimensions (length × height × width)	365 × 25 × 25 mm (without connector dimension)
Weight	0.7 kg
Connector	Input 1 × 7/16 (female), Output 3 × 7/16 (female)

Environmental data	
Environmental conditions	indoor/outdoor
Operation temperature	-55 to 60 °C
IP rating	IP65
RoHS 2011/65/EU	compliant

Splitter

## Reactive Power Splitter



Ordering information	<b>4-Way Reactive Power Splitter</b>
Type no.	<b>5501.41.0104</b>
Frequency range	<b>380 – 4000 MHz</b>
Version	<b>7/16 (female)</b>
Length	<b>399 mm</b>
Description	<ul style="list-style-type: none"> <li>• Installation Equipment for Special Communication Antennas</li> <li>• 2-Way Low-loss Power Splitter</li> <li>• Multi-band</li> <li>• Low PIM -160 dBc</li> </ul>
Item no.	-

Electrical data	Band 1
Frequency	380 – 4000 MHz
Split Loss	6.0 dB
Impedance	50 Ohm
Composite power max.	500 W
Peak envelope power	1500 W
Ambient temperature	25 °C
PIM3	-160 dBc at 2 × 43 dBm

Mechanical data	
Dimensions (length × height × width)	399 × 25 × 25 mm (without connector dimension)
Weight	0.8 kg
Connector	Input 1 × 7/16 (female), Output 4 × 7/16 (female)

Environmental data	
Environmental conditions	indoor/outdoor
Operation temperature	-55 to 60 °C
IP rating	IP65
RoHS 2011/65/EU	compliant



Splitter

## Reactive Power Splitter



Ordering information	<b>2-Way Reactive Power Splitter</b>
Type no.	<b>5502.17.0050</b>
Frequency range	<b>694 – 3800 MHz</b>
Version	<b>N (female)</b>
Length	<b>190 mm</b>
Description	<ul style="list-style-type: none"> <li>• Evenly split high power signals with minimal reflections or loss</li> <li>• Wide frequency range allows use with multiband antennas and leaky cable systems</li> </ul>
Item no.	85029265

Electrical data	Band 1	Band 2
Frequency	694 – 2500 MHz	2500 – 3800 MHz
Split Loss	3 dB	3 dB
Insertion Loss	0.1 dB	0.2 dB
Char. Impedance	50 Ohm	50 Ohm
Composite power max.	300 W	300 W
Intermodulation distortion	-161 dBc at 2 × 43 dBm	-161 dBc at 2 × 43 dBm

Mechanical data	
Dimensions (height × width × length)	28.5 × 28.5 × 190 mm
Weight	0.21 kg
Connector	Input 1 × N jack (female), Output 2 × N jack (female)

Environmental data	
Environmental conditions	indoor/outdoor
Operation temperature	-35 to 85 °C
IP rating	IP67
RoHS 2011/65/EU	compliant

Splitter

## Reactive Power Splitter



Ordering information	<b>2-Way Reactive Power Splitter</b>
Type no.	<b>5502.41.0050</b>
Frequency range	<b>694 – 3800 MHz</b>
Version	<b>7/16 (female)</b>
Length	<b>190 mm</b>
Description	<ul style="list-style-type: none"> <li>• Evenly split high power signals with minimal reflections or loss</li> <li>• Wide frequency range allows use with multiband antennas and leaky cable systems</li> </ul>
Item no.	85029268

Electrical data	Band 1	Band 2
Frequency	694 – 2500 MHz	2500 – 3800 MHz
Split Loss	3 dB	3 dB
Insertion Loss	0.1 dB	0.2 dB
Char. Impedance	50 Ohm	50 Ohm
Composite power max.	500 W	500 W
Intermodulation distortion	-161 dBc at 2 × 43 dBm	-161 dBc at 2 × 43 dBm

Mechanical data	
Dimensions (height × width × length)	28.5 × 28.5 × 190 mm
Weight	0.29 kg
Connector	Input 1 × 7/16 jack (female), Output 2 × 7/16 jack (female)

Environmental data	
Environmental conditions	indoor/outdoor
Operation temperature	-35 to 85 °C
IP rating	IP67
RoHS 2011/65/EU	compliant

**Unequal Power Divider**

Frequency range	<b>350 – 2700 MHz</b>
Version	<b>4.3-10 (female)</b>
Width	<b>89 mm</b>

**Description**

These tappers unevenly split high power cellular signals with minimal reflections or loss over the wireless bands in the range 350-2700 MHz (no coupling from 960 to 1710 MHz). The innovative asymmetric design ensures an excellent input VSWR and coupling flatness across the band. The lightweight design allows easy attachment to a wall using the supplied bracket. Designed with only a few solder joints and an air dielectric, loss is minimized and reliability enhanced. It supports public safety and cellular bands, as well as WiFi 2.4 GHz.

## Ordering information

<b>2:1 unequal power divider</b>			
Type no. <b>5501.31.0002</b> , Item no. 85075310			
	MHz Band 1 350 – 960	MHz Band 2 1710 – 2700	
Return Loss	15 dB	17 dB	
Tapp Loss	3 dB	3 dB	
Insertion Loss	1.8 dB	1.8 dB	

<b>3:1 unequal power divider</b>			
Type no. <b>5501.31.0003</b> , Item no. 85075311			
	MHz Band 1 350 – 960	MHz Band 2 1710 – 2700	
Return Loss	17.6 dB	17.6 dB	
Tapp Loss	4.8 dB	4.8 dB	
Insertion Loss	1.3 dB	1.3 dB	

<b>4:1 unequal power divider</b>			
Type no. <b>5501.31.0004</b> , Item no. 85075312			
	MHz Band 1 350 – 960	MHz Band 2 1710 – 1800	MHz Band 3 1800 – 2700
Return Loss	20.8 dB	17.6 dB	20.8 dB
Tapp Loss	6 dB	6 dB	6 dB
Insertion Loss	1 dB	1 dB	1 dB

<b>10:1 unequal power divider</b>			
Type no. <b>5501.31.0010</b> , Item no. 85075315			
	MHz Band 1 350 – 960	MHz Band 2 1710 – 1800	MHz Band 3 1800 – 2700
Return Loss	20.8 dB	17.6 dB	20.8 dB
Tapp Loss	10 dB	10 dB	10 dB
Insertion Loss	0.4 dB	0.4 dB	0.4 dB

<b>30:1 unequal power divider</b>			
Type no. <b>5501.31.0015</b> , Item no. 85075316			
	MHz Band 1 350 – 960	MHz Band 2 1710 – 2700	
Return Loss	20.8 dB	20.8 dB	
Tapp Loss	15 dB	15 dB	
Insertion Loss	0.1 dB	0.1 dB	

<b>100:1 unequal power divider</b>			
Type no. <b>5501.31.0100</b> , Item no. 85075317			
	MHz Band 1 350 – 960	MHz Band 2 1710 – 2700	
Return Loss	20.8 dB	20.8 dB	
Tapp Loss	20 dB	20 dB	
Insertion Loss	0.1 dB	0.1 dB	

## Specifications

<b>Electrical data</b>	
Char. Impedance	50 Ohm
Composite power max.	300 W
Peak envelope power	2000 W
Intermodulation distortion	-161 dBc at 2 × 43 dBm

<b>Mechanical data</b>			
Dimensions (height × width × length)	32 × 89 × 32 mm		
Weight	0.42 kg		
Connector	Main Line In	Main Line Out	Tap Port
	4.3-10 jack (female)	4.3-10 jack (female)	4.3-10 jack (female)

<b>Environmental data</b>	
Environmental conditions	indoor/outdoor
Operation temperature	-40 to 75 °C
IP rating	IP67
RoHS 2011/65/EU	compliant

# Diplexer



Ordering information	<b>TETRA + cellular + WiFi diplexer</b>
Type no.	<b>2501.17.0092</b>
Frequency range	<b>80 – 2700 MHz</b>
Version	<b>N (female)</b>
Height	<b>31.7 mm</b>
Item no.	84103626

## Description

Diplexer which allows combination and separation of signals in the 80 – 960 MHz and 1695 – 2700 MHz wireless bands. To minimize band inter-reaction, the inputs are well isolated and have minimal insertion loss over their respective frequency bands. Attention to mechanical design ensures low passive intermodulation. The diplexer is designed using passive, proprietary techniques for low loss and high reliability.

Electrical data per band	Band 1	Band 2
Frequency	80 – 960 MHz	1695 – 2700 MHz
Insertion Loss	0.3 dB	0.5 dB

Electrical data	
Return Loss	20 dB
Composite power max.	120 W
Peak envelope power	3000 W
Impedance	50 Ohm
Intermodulation distortion	-155 dBc at 2 × 43 dBm

Mechanical data	
Dimensions (height × width × depth)	31.7 × 106.7 × 122.3 mm
Weight	0.55 kg
Connector	N jack (female)

Environmental data	
Environmental conditions	indoor
Operation temperature	-35 to 70 °C
IP rating	IP64
RoHS 2011/65/EU	compliant

Material data	
Housing material	aluminium
Surface treatment	passivated

# Quadraplexer



Ordering information	<b>4-port quadraplexer</b>
Type no.	<b>2501.41.0100</b>
Frequency range	<b>380 – 2690 MHz</b>
Version	<b>7/16 (female)</b>
Height	<b>232 mm</b>
Item no.	85070953

## Description

A 4-port quadraplexer which allows combination and separation of the signals in 380–960/1710–1880/1920–2170/2500–2690 MHz wireless bands. To minimize band inter-reaction, the inputs have an isolation >50dB and have minimal insertion loss <0.3dB over their respective frequency bands.

Electrical data per band	Band 1	Band 2	Band 1	Band 2
Frequency	380 – 960 MHz	1710 – 1880 MHz	1920 – 2170 MHz	2500 – 2690 MHz
Composite power max.	700 W	300 W	200 W	200 W

Electrical data	
Insertion Loss	0.3 dB
Return Loss	18 dB
Peak envelope power	1500 W
Impedance	50 Ohm
Intermodulation distortion	-155 dBc at 2 × 43 dBm

Mechanical data	
Dimensions (height × width × depth)	232 × 223 × 50 mm
Weight	4.6 kg
Connector	7/16 jack (female)

Environmental data	
Environmental conditions	indoor/outdoor
Operation temperature	-40 to 65 °C
IP rating	IP67
RoHS 2011/65/EU	compliant

Material data	
Housing material	aluminium
Surface treatment	black paint

